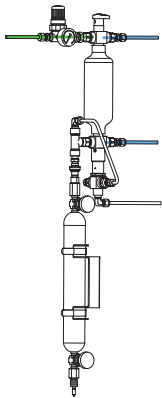
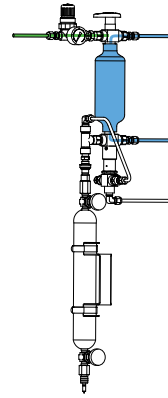


The ability to purge the sample point ensures optimal retrieval of a representative, contamination free sample. The S23 type sampler in high vapour phase configuration provides a system purge and positive vent line shut off in addition to a fixed sample volume for high vapour phase products. The unique design offers a one-handle operation by multiple valves, allowing for sampling independent of the process conditions. These features provide sample accuracy and safety.

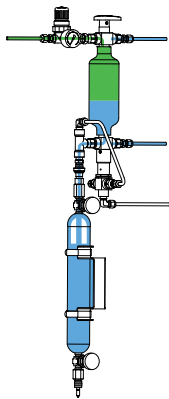
1 OPERATION/FUNCTION



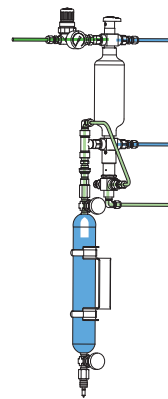
0 - off
Install the sample cylinder and open the top needle valve. The valve in the vent line is closed.



1 - system purge
Turn the handle to the "bypass" position, allowing a continuous flow of liquid through the sample chamber to ensure representative sampling. This position can be held for any required time. The valve in the vent line is closed.

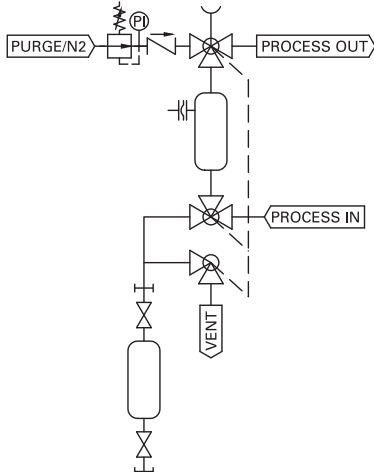


2 - sample
Turn the handle to the "sample" position allowing the product to flow into the sample cylinder. The fixed volume chamber determines the amount of sample. The inert gas will assist the sample to flow into the cylinder and will purge the sampler. The valve in the vent line is closed.

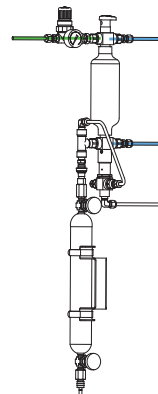


3 - vent
Close the needle valve on top of the sample cylinder and turn the handle to the vent position. The valve in the vent line is open and the volume between bottom three-way valve and needle valve on top of the sample cylinder is being vented.

2 TYPICAL P & ID



High vapour phase (D5)



4 - off
Turn the handle to the "off" position. Remove the sample cylinder. The valve in the vent line is closed.



3 FEATURES/ADVANTAGES/PROPERTIES

- Sampling independent of process conditions
- High vapour phase applications
- Representative sampling
- Zero dead volume
- Closed sampling
- One handle operation
- Fixed volume sampling
- Purging of the sampler
- Positive vent line shut off

4 BASIC SPECIFICATIONS

Material	SS316, SS316L.
Cylinder type	75cc cylinder.
Sample chamber	50cc.
Valve	Three-way ball valve type W83. PTFE seats, Viton A O-rings. Pressure range 103 bar @ 20°C (1500 psig @ 70°F). Temperature range -17/+232°C (0/+450°F).
Operation	Manual.
Connections	1/4" FNPT, regulator, gauge and check valve included.
Please note:	the above is a basic specification only. DOPAK® Samplers can be offered with a wide variety of options as mentioned below.



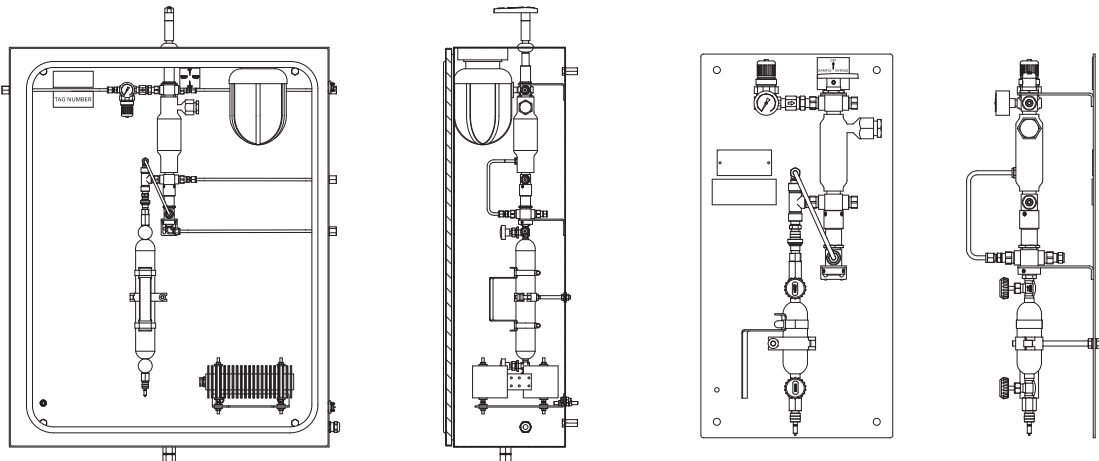
5 OPTIONS

- Lockable handle
- Mounting plate
- Pipe stand
- Block valve
- Flow meter
- Enclosure
- Steam jacket
- Sample cooler
- Mounting bracket
- Steam sterilising cap
- Welded connections
- Exotic materials
- Larger/smaller sample size

For more information please refer to our sheets:

Options for DOPAK® process samplers, sampling into a cylinder.

Components for DOPAK® process samplers.



Dopak Inc.

Houston, Texas 77041, USA
 Phone 713-460-8311
 Fax 713-460-8578
 E-mail info@dopak.com

Dovianus BV

Bergschenhoek, The Netherlands
 Phone +31 10 524 20 00
 Fax +31 10 456 67 74
 E-mail info@dopak.nl

Your local representative:

