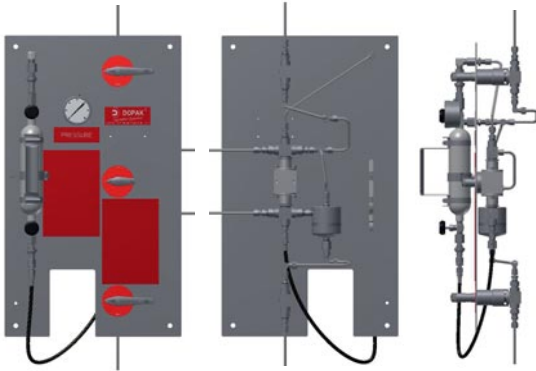
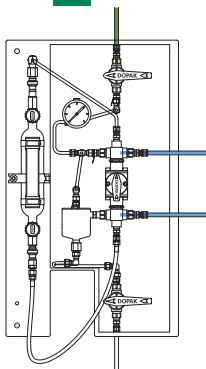


## DOPAK® Process Sampler Type S32-LG purge expansion configuration (F4)



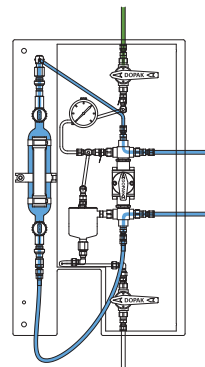
The ability to purge the sample point ensures optimal retrieval of a representative, contamination free sample. The S32-LG type samplers provide a system purge in addition to sampling in a sample cylinder with a predefined filling rate. This is achieved by using an expansion chamber. The system is equipped with an extra valve on the expansion chamber to enable purging of the expansion chamber with an inert gas for product with a boiling point around atmospheric conditions. The unique design offers a one handle operation by multiple valves. This sampler type is suitable for liquefied gases and liquids.

### 1 OPERATION/FUNCTION



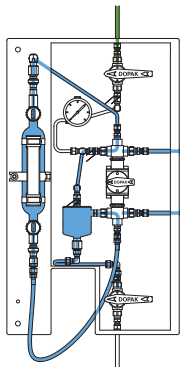
#### 0 - off

Install the sample cylinder and connect the flexible hose to the bottom side of the sample cylinder. Open the needle valves of the sample cylinder.



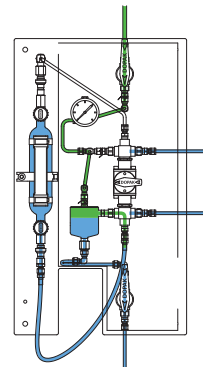
#### 1 - system purge

Turn the handle to the "process" position, allowing the sample cylinder to be filled. To ensure a representative sample, this position can be held for any required time.



#### 2 - expansion

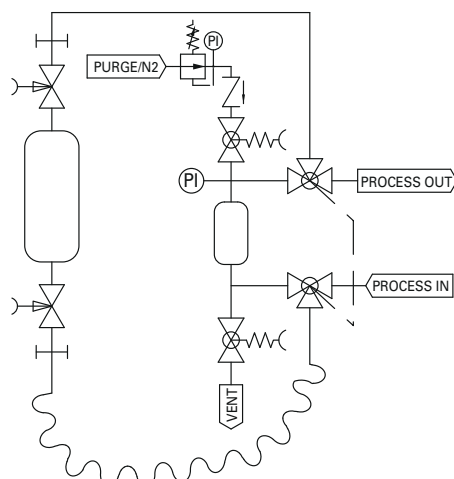
Turn the handle to the "expansion" position. The internal connection between the sample cylinder and the expansion chamber has now been made. Maintain this position for any required time to enable the fluid to divide over the sample cylinder and expansion chamber. Close the two needle valves of the sample cylinder.



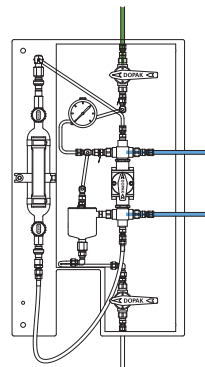
#### 3 - vent/purge

Open the valve on the expansion chamber and the valve in the purge line. The expansion chamber and quick connects are being depressurised to the vent system and purged with an inert gas. Close both valves by releasing the handles.

### 2 TYPICAL P & ID



purge expansion configuration (F4)



#### 4 - off

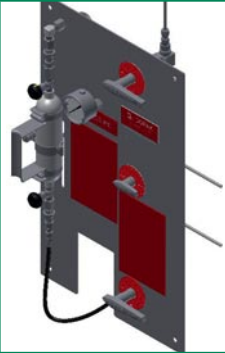
Turn the handle to the "off" position. Disconnect the flexible hose. Remove the sample cylinder and connect the flexible hose to the top quick connect coupling.



### 3 FEATURES/ADVANTAGES/PROPERTIES

- Sampling in cylinder with predefined filling rate
- Representative sampling
- Zero dead volume
- Closed sampling
- One handle operation of mutiple valves
- Fixed volume sampling
- Purging of sampler
- No direct connection between vent line and process lines
- Depressurising of quick connect couplings
- No outage tube needed

### 4 BASIC SPECIFICATIONS

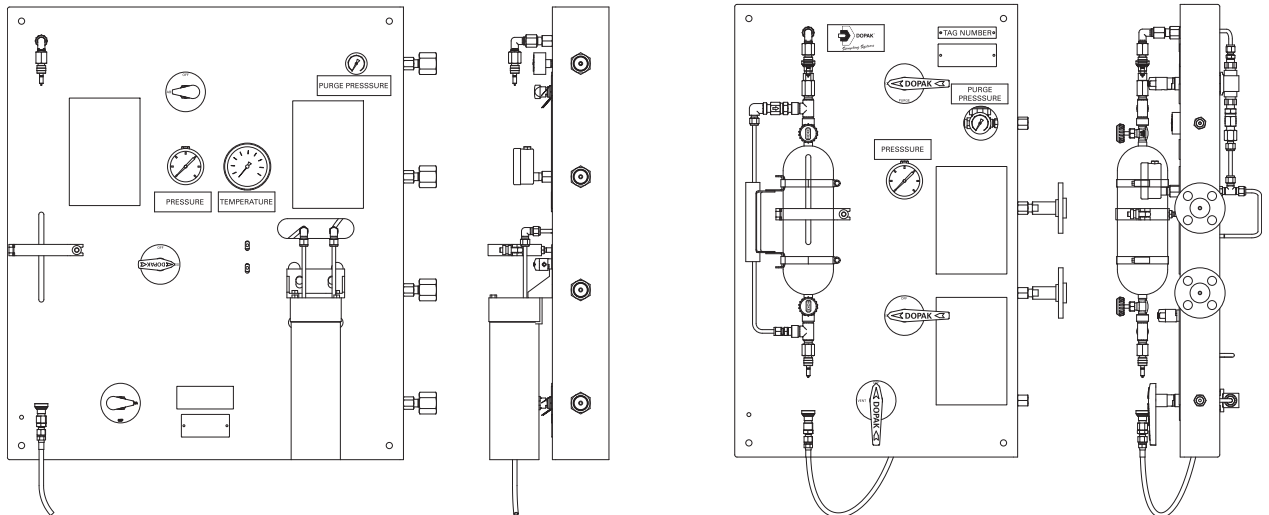
<b>Material</b>	SS316, SS316L.	
<b>Cylinder Type</b>	500cc cylinder.	
<b>Expansion chamber</b>	100cc (20% of sample volume).	
<b>Valve</b>	Three-way ball valve type W83. PTFE seats, Viton A O-rings. Pressure range 103 bar @ 20°C (1500 psig @ 70°F). Temperature range -17/+232°C (0/+450°F).	
<b>Operation</b>	Manual.	
<b>Connections</b>	1/4" FNPT. Regulator, pressure gauge and check valve included.	
<b>Please note:</b>	the above is a basic specification only. DOPAK® Samplers can be offered with a wide variety of options as mentioned below.	

### 5 OPTIONS

- Spring return handle
- Lockable handle
- Pipe stand
- Block valve
- Flow meter
- Enclosure
- Sample cooler
- Exotic materials
- Larger/smaller sample size

For more information please refer to our sheets:

**Options for DOPAK® process sampler, sampling into a cylinder.**  
**Components for DOPAK® process samplers.**



#### Dopak Inc.

Houston, Texas 77041, USA  
 Phone 713-460-8311  
 Fax 713-460-8578  
 E-mail info@dopak.com

#### Dovianus BV

Bergschenhoek, The Netherlands  
 Phone +31 10 524 20 00  
 Fax +31 10 524 20 29  
 E-mail info@dopak.nl

Your local representative:

